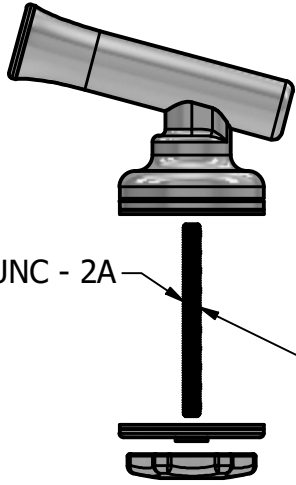
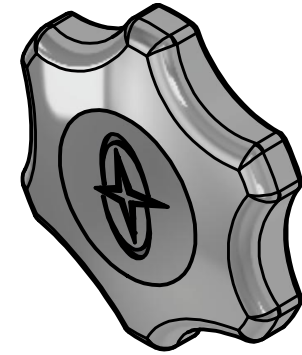


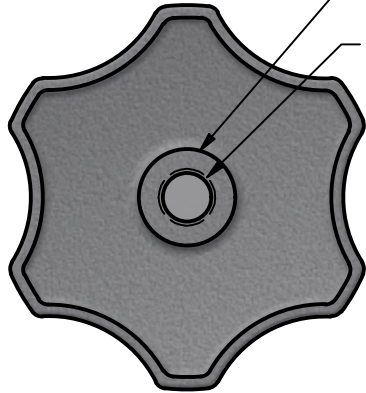
Marketing Drawing for 400821



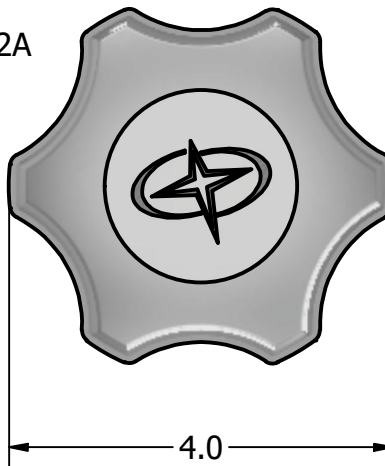
MUST SOURCE YOUR OWN ROD TO FIT HARD TOP THICKNESS.



ISOMETRIC VIEW
(FOR REFERENCE ONLY)



1/2-13 UNC - 2A



4.0



.75

***NOTES**

- 1) FOR USE WITH OR-BA-21 GEMPLUX COASTAL OUTRIGGER BASE.
- 2) MUST SOURCE 1/2 - 13 UNC THREADED ROD TO FIT THE THICKNESS OF YOUR HARD TOP.
- 3) OPTIONS CAN BE FOUND ON SITES LIKE MCMASTER CARR. RECOMMEND USING 316 STAINLESS ROD.
- 4) APPLY RED LOCKTITE TO ROD ON THE END THAT IS THREADED INTO THE KNOB. LEAVE OTHER END CLEAN AND THREAD INTO COASTAL OUTRIGGER BASE. USE TWO NUTS JAM TOGETHER TO TIGHTEN INTO KNOB THEN REMOVE THE JAM NUTS.



GEMPLUX®

Description

KNOB FOR COASTAL BASE WITHOUT STUD

Size	Part No	Units	Rev	Scale
A	400821	INCHES	0	1 / 2

Phone: 800.874.4506

www.gemplux.com